



INDOFINE Chemical Company, Inc.

121 Stryker Lane, Bldg. 30, Suite 1 • Hillsborough, NJ 08844 • U.S.A.

Phone: (908) 359-6778 • FAX: (908) 359-1179

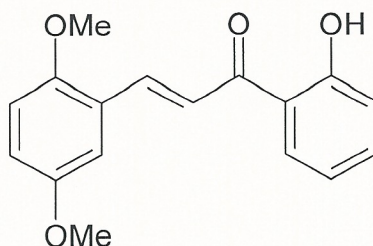
website: www.indofinechemical.com

e-mail: chemical@indofinechemical.com

CERTIFICATE OF ANALYSIS

Cat. No.: 19-813

| | |
|---------------------------|--|
| <u>Product:</u> | 2,5-DIMETHOXY-2'-HYDROXYCHALCONE |
| <u>Lot No.:</u> | 0409248 |
| <u>Molecular Formula:</u> | C ₁₇ H ₁₆ O ₄ |
| <u>Molecular Weight:</u> | 284.32 |
| <u>Melting Point:</u> | 98-99.6°C |
| <u>Appearance:</u> | Yellow powder |
| <u>Solubility:</u> | Soluble in chloroform |
| <u>TLC:</u> | Hexane:Ethyl acetate (9.5 : 0.5) |
| <u>NMR Spectrum:</u> | Enclosed |
| <u>IR Spectrum:</u> | Enclosed |
| <u>Purity (HPLC):</u> | 99+% |





INDOFINE Chemical Company, Inc.

121 Stryker Lane, Bldg. 30, Suite 1 • Hillsborough, NJ 08844 • U.S.A.

Phone: (908) 359-6778 • FAX: (908) 359-1179

website: www.indofinechemical.com

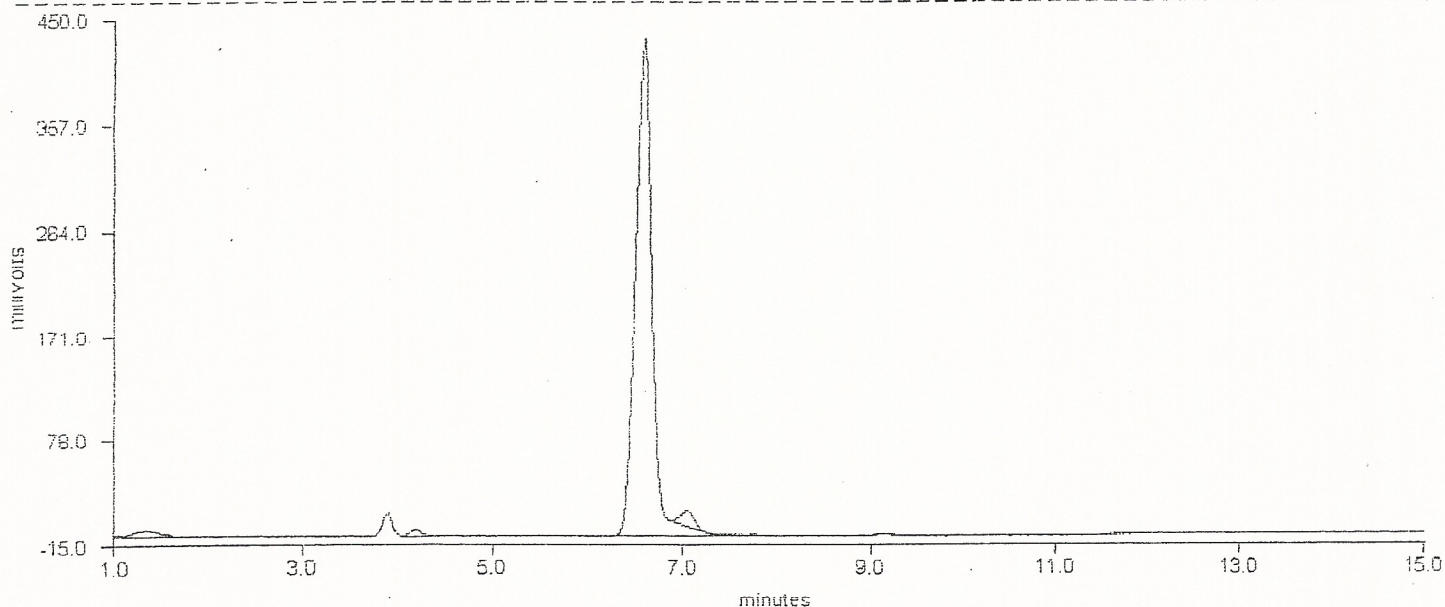
e-mail: chemical@indofinechemical.com

HPLC ANALYSIS

Catalog no.: 19-813
Product name: 2,5-Dimethoxy-2'-hydroxychalcone
Lot No.: 0409248

DELTA CHROMATOGRAPHY DATA SYSTEM

STRIPCHART PLOT FOR CHROMATOGRAM - c:\deltaw\data\np-003.raw



DELTA CHROMATOGRAPHY DATA SYSTEM

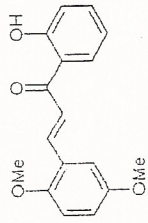
LISTING PEAK TABLE FOR CHROMATOGRAM - c:\deltaw\data\np-003.raw.RAW

| # | Type Name | Ret.Time | Area(uVSec) | Height(mV) | Area Percent |
|---|-----------|----------|-------------|------------|--------------|
| 1 | MM | 4.18 | 20309 | 4.0 | 0.4 |
| 2 | BB | 6.59 | 5513219 | 439.9 | 99.0 |
| 3 | MM | 7.06 | 33989 | 6.1 | 0.6 |

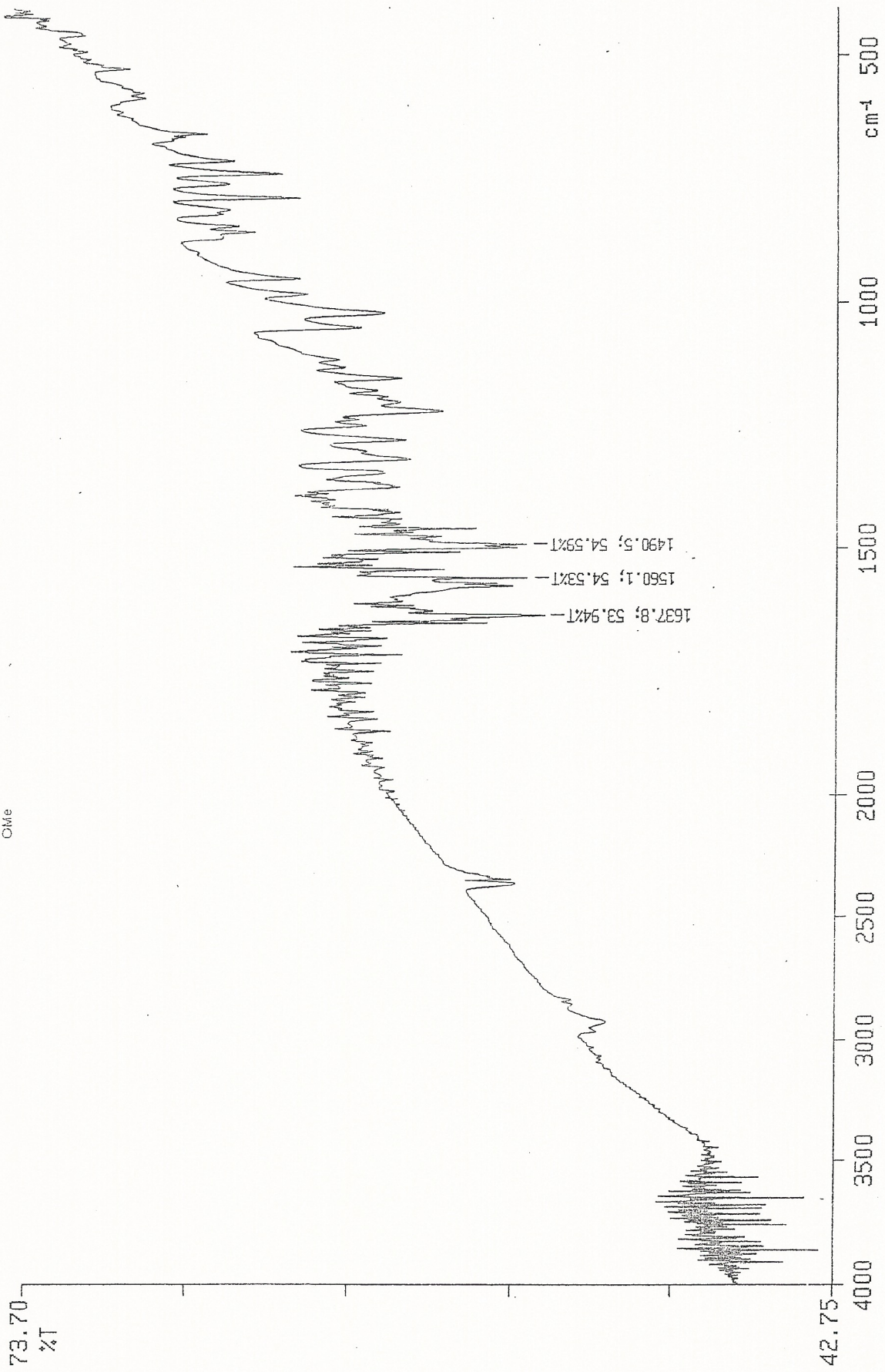


INDOFINE Chemical Company, Inc.
121 STRYKER LANE
BLDG. 30, SUITE 1
HILLSBOROUGH, NJ 08844

Catalog no.: 19-813
Product name: 2,5-Dimethoxy-2'-hydroxychalcone
Lot No.: 0409248



PERKIN ELMER



Y: 1 scan, 4.0cm-1



INDOFINE Chemical Company, Inc.
121 STRYKER LANE
BLDG. 30, SUITE 1
HILLSBOROUGH, NJ 08844

Catalog no.: 19-813
Product name: 2,5-Dimethoxy-2'-hydroxychalcone
Lot No.: 0409248

